

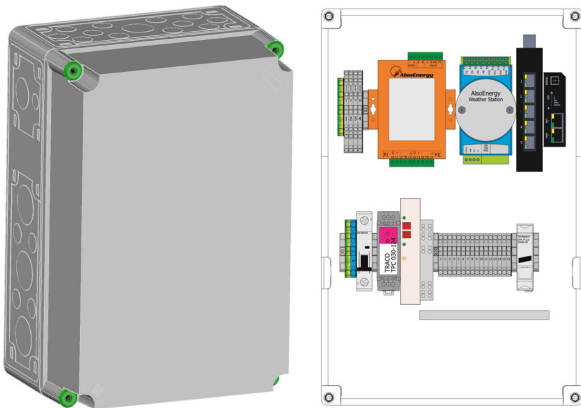
skylog[®] C&I

Data logger system

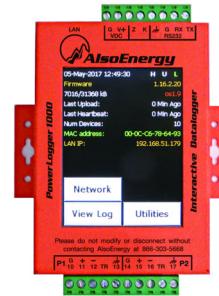


Our powerful and compact data logging system skylog[®] C&I, has been designed for commercial and industrial (C&I) solar energy projects. Communicating with the plant via Ethernet or RS485 bus half duplex, skylog[®] C&I can read and save all plant data transmitted by inverters, field sensor equipment, and any other status and measurement information, irrespective of make. The cost-optimized all-in-one solution is suitable for outdoor use and broadcasts the data to the PowerTrack

backend. The heart of the system is an industrial PC (PowerLogger 1000) with an interactive touch screen LCD display which allows workers on site to interact with the system without the need for a laptop computer. Remote operations and diagnostics reduce onsite efforts throughout the project lifecycle, and automated configuration simplifies the installation process.



skylog[®] C&I with UV-resistant thermoplastic cabinet



Industrial PC (PowerLogger 1000) with touch screen LCD display

PRODUCT FEATURES

- > Data logger component of a complete monitoring system for C&I solar energy projects
- > Monitoring of central or string inverters
- > Comprehensive range of weather sensor accessories available:
 - Silicon reference cell with ambient & module temperature sensor
 - Hukseflux SR05 pyranometer (IEC 61724-1 Class C)
 - Hukseflux SR30 pyranometer (IEC 61724-1 Class A)
 - RT1 rooftop sensor (irradiation measurement)
 - Lufft WS compact weather sensors
- > Support of inverters and energy meters from various manufacturers

POWERLOGGER 1000 CAPABILITIES

- > Sends real-time field data and diagnostics information to PowerTrack software platform
- > Interactive touch display for field troubleshooting and commissioning
- > Fully automated configuration
- > Local data storage eliminates data gaps from lost network connectivity events
- > Manual remote control for clearing inverter faults, turning inverter off and on, and operating switchgear where permitted





TECHNICAL DATA

OPTIONS	PRODUCT CODE										DESCRIPTION	
skylog C&I-	7	3	X	X	-	X	X	X	0	0	X	
Embedded Computer	3											1 x Embedded computer (Touch screen LCD Display, 450 MHz, Arm9™ Core, Windows Embedded)
Network		0										-
		A										1 x Industrial Ethernet Switch (5x 10/100BaseTX)
Router			0									-
			4									Industrial LTE-Router (Europe) with integrated 2-port switch
Power Supply					4							Power supply unit 85 to 264 V AC / 47 to 63 Hz (no UPS)
					5							24 V DC power supply
RS485						0						-
Overvoltage Protection						6						2 x RS485 fieldbus interfaces, overvoltage protected
Ethernet								0				-
Overvoltage Protection								1				1 x Ethernet overvoltage protection
I/O-Modules											0	-
											1	One I/O module
											2	Two I/O modules

ADDITIONAL INTERFACES	ITEM NO.	I/O MODULE
I/O modules	A1	Digitizer: 2 Analog Inputs (0-25mV, 0-250mV, 0-2.5V), 2 Analog Inputs (0-10 VDC or 4-20mA), 2 Pulse Inputs (SO counter)
	A2	8 x Digital Input / 8 x Digital Output max. 200 mA load
	A3	2 Analog Inputs (0-25mV, 0-250mV, 0-2.5V), 2 Analog Inputs (0-10 VDC or 4-20mA), 2 Pulse Inputs (SO counter), 8 x Digital Input / 8 x Digital Output max. 200 mA load

INTERNAL PLANT COMMUNICATION	
Protocol	IP Ethernet, skytron® energy specific communication

MECHANICAL DATA	CABINET
Protection Class	IP 65 (acc. to EN 60529), IK08 (acc. to EN 50102)
Marks	CE
Standards	EN 61000-6-4/01.07 + A1/02.11, EN61000-6-2/8.05
Dimensions h x w x d	450 x 300 x 214 mm
Weight	5 kg / 11 lb; 6 kg / 14 lb with package
Material of Cabinet	Thermoplast with metric knockouts / UV- and weather-resistant
Mounting options	Wall mounting (4 pcs. fixing lugs, material: stainless steel)

AMBIENT CONDITIONS	
Operating Temperature	-25 °C to +55 °C / -13 °F to +131 °F
Storage Temperature	-25 °C to +70 °C / -13 °F to +158 °F
Relative Air Humidity	up to 95 % non-condensing